



Trade supplier to the
kitchen & bedroom industry

Date of
print/release

June
2021

Technical Guide



BINS & DRIP TRAYS

Please Note: The information shown in this literature is accurate as at the date of print/release shown on such information but it may be subject to changes after such date. Please therefore ensure that you are viewing the most current product available and check with us if you have any doubt about the suitability of the product or accuracy of the information shown.

CONTENTS:

Bins Block 2.0.....page 3

IFA Under Sink Drip Trays.....page 6

IMPORTANT PLEASE NOTE:

It is the responsibility of the installer to check the corresponding manufacturer's installation information and the manufacturer's technical information to ensure this is up to date and to ensure that the products can be fitted in a way they are displayed and the products are suitable for your requirements.

We specifically exclude any liability in this regard unless the products are fitted in accordance with the specifications we supply and the manufacturer's installation recommendations are used in a way recommended by the manufacturer and in accordance with the manufacturer's technical information provided.

The information shown in this literature is accurate as at the date of print/release shown on such information but it may be subject to changes after such date. Please therefore ensure that you are viewing the most current product information available and check with us if you have any doubt about the suitability of the product or accuracy of the information shown.

Due to the limitations on photographic reproduction, colours may differ slightly from the actual products shown.

BINS BLOCK 2.0

BLOCK 2.0 Pull Out Bins

- Single block structure manufactured in Epoxy powder painted steel sheet.
- Fibreglass reinforced Nylon supports equipped with Hettich V6 total extraction and soft closing runners.
- Available in 3 widths with 35 to 86 litres total capacity.
- Compatible with 16 and 18mm carcasses.
- Includes plastic lid.
- Fixed directly to the door or installed inside a cabinet base with hinged door.
- Easy assembling and cleaning, 3D adjustment of the door.



BLOCK 2.0 - 69BIN40
To suit 400mm cabinet,
1 compartment, 35L capacity.



BLOCK 2.0 - 69BIN50
To suit 500mm cabinet,
2 compartments, 35L + 35L
capacity.



BLOCK 2.0 - 69BIN60
To suit 600mm cabinet,
4 compartments,
35L + 35L + 8L + 8L capacity.

Example pack contents (69BIN50)



TKC Code	Art. Ref	Description	Capacity	Finish	Height	Depth	Width
69BIN40	PBR A4740A	BLOCK 2.0 Pull out bin, 400mm cabinet	35 litres	Galvanized metal sheet RAL7012; Plastics RAL7012	53.5mm	47.8mm	36.3mm
69BIN50	PBR A4750A	BLOCK 2.0 Pull out bin, 500mm cabinet	35 + 35 litres		53.5mm	47.8mm	46.3mm
69BIN60	PBR A4760A	BLOCK 2.0 Pull out bin, 600mm cabinet	35 + 35 + 8 + 8 litres		53.5mm	47.8mm	56.3mm



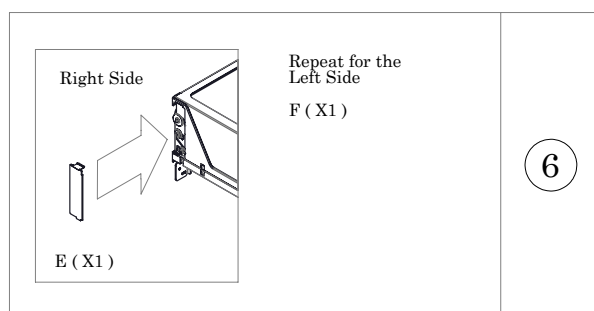
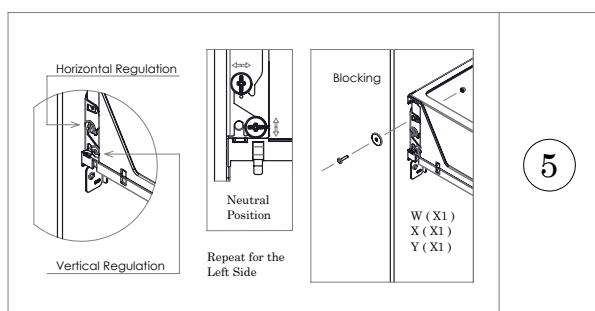
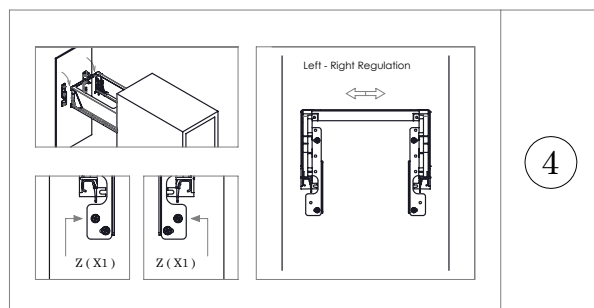
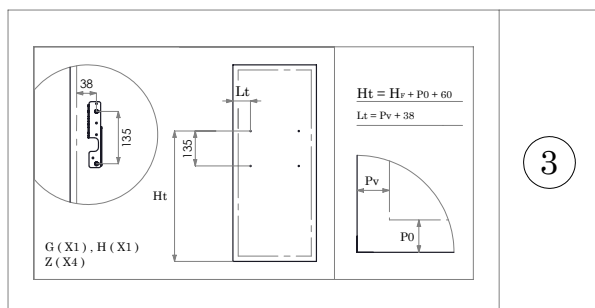
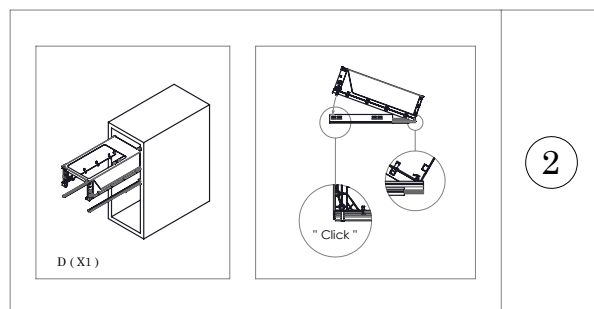
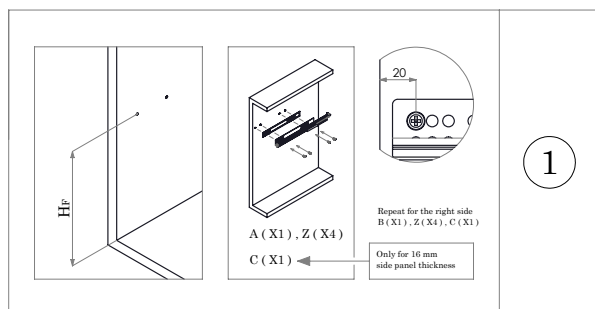
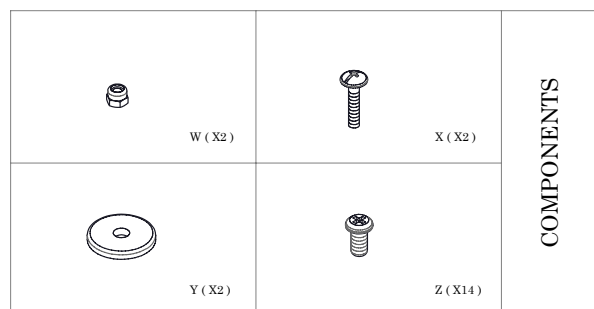
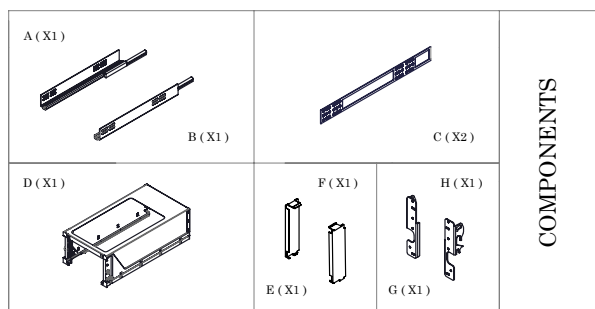
BINS BLOCK 2.0

ellepi

BLOCK 2.0

1 9 5 4

Pull Out Version - PBR A



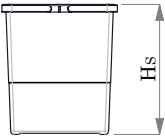
BINS BLOCK 2.0



1 9 5 4

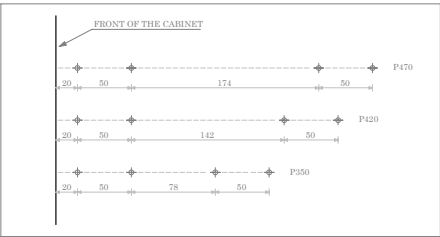
BLOCK 2.0

Pull Out Version - PBR A


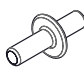
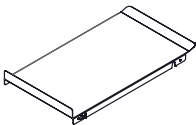


Hs	Hf
530	410
440	320
340	220
280	160
220	100

LEGEND



DRILLING LAYOUT

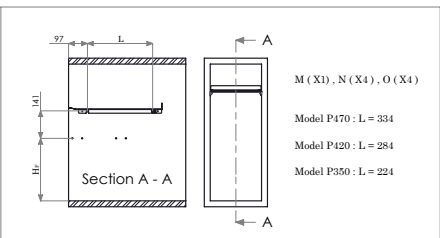


M (X1)

N (X4)

O (X4)

OPTIONAL COMPONENTS



Section A - A

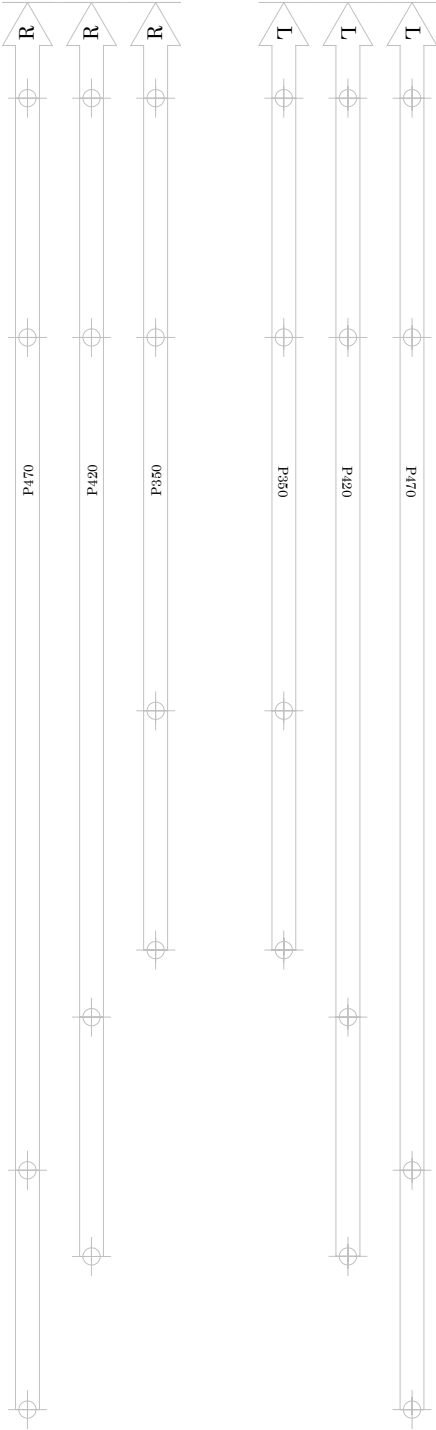
M (X1), N (X4), O (X4)

Model P470 : L = 334

Model P420 : L = 284

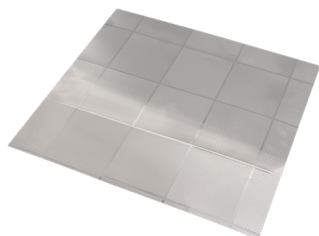
Model P350 : L = 224

7

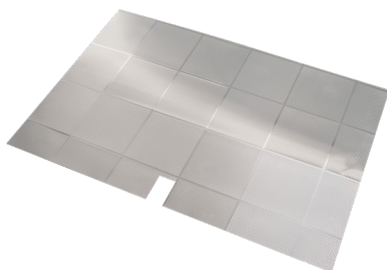


UNDER SINK TRAYS

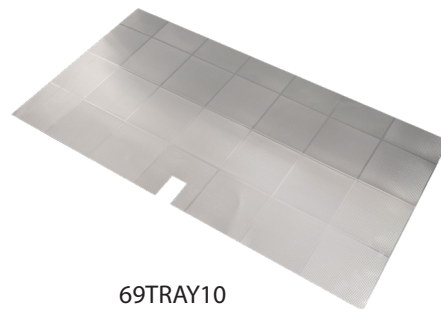
IFA Under Sink Drip Tray - for cabinet protection



69TRAY60



69TRAY80



69TRAY10

- Aluminium under sink cabinet protection
- Available for 600mm, 800mm and 1000mm cabinet widths
- Includes cut out for 800mm and 1000mm cabinet centre posts

Code	Description	Depth	Width
69TRAY60	IFA under sink drip tray, 600mm cabinet NEW	500mm	564mm
69TRAY80	IFA under sink drip tray, 800mm cabinet NEW	500mm	764mm
69TRAY10	IFA under sink drip tray, 1000mm cabinet NEW	500mm	964mm