

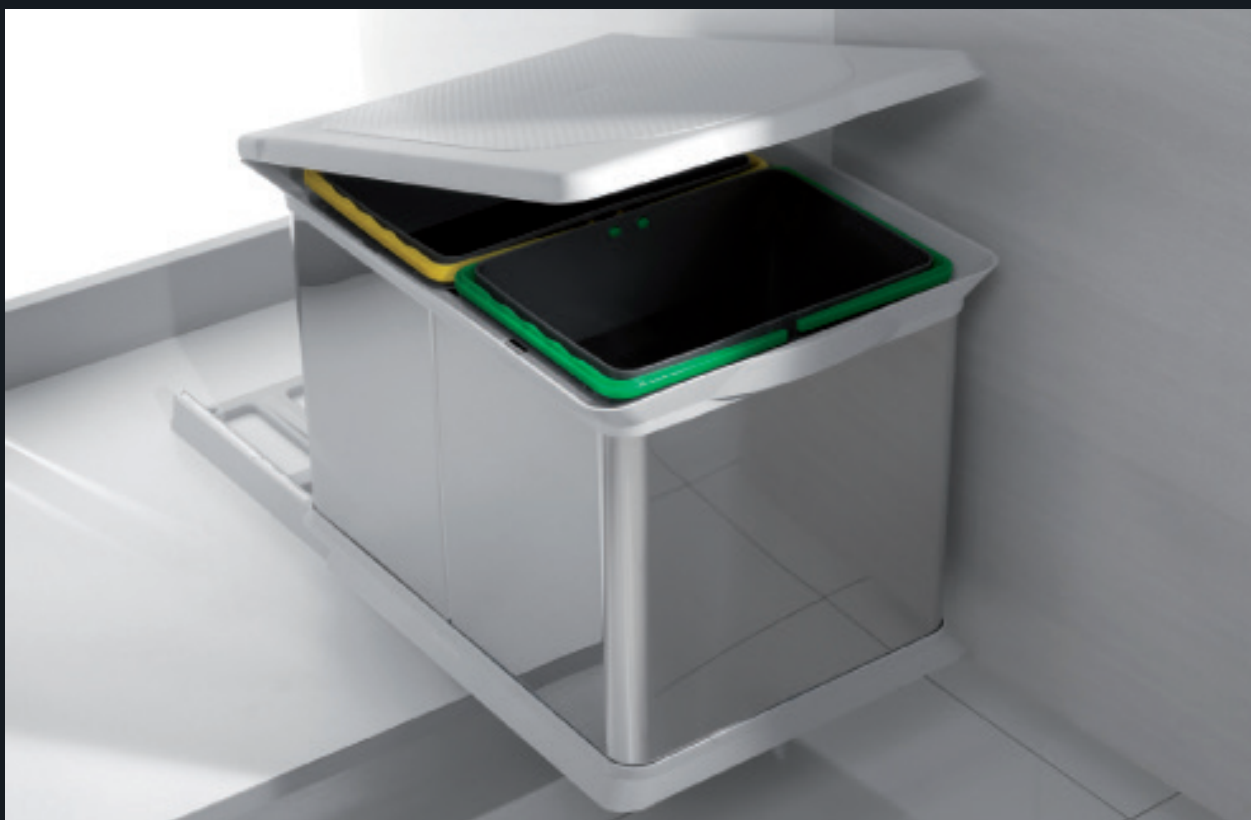


Trade supplier to the  
kitchen & bedroom industry

Date of  
print/release

July  
2017

# Technical Guide



## ACCESSORIES

**Please Note:** The information shown in this literature is accurate as at the date of print/release shown on such information but it may be subject to changes after such date. Please therefore ensure that you are viewing the most current product available and check with us if you have any doubt about the suitability of the product or accuracy of the information shown.

## IMPORTANT PLEASE NOTE:

The information contained in this literature is for illustrative purposes only to assist in choosing your desired kitchen. While we endeavour to keep the information up to date and correct we do not make any representations or warranties of any kind, express or implied, about the completeness, accuracy, reliability and suitability of the doors and products that appear in this literature.

We aim to showcase as many different items as possible and therefore some products have been installed and photographed purely to show as many of our product features as possible and they should not be taken as an example of how they are intended to be installed in real kitchen installations.

**It is therefore the responsibility of the installer to check the corresponding manufacturer's installation information and the manufacturer's technical information to ensure this is up to date and to ensure that the products can be fitted in a way they are displayed and the products are suitable for your requirements.**

We specifically exclude any liability in this regard unless the products are fitted in accordance with the specifications we supply and the manufacturer's installation recommendations are used in a way recommended by the manufacturer and in accordance with the manufacturer's technical information provided.

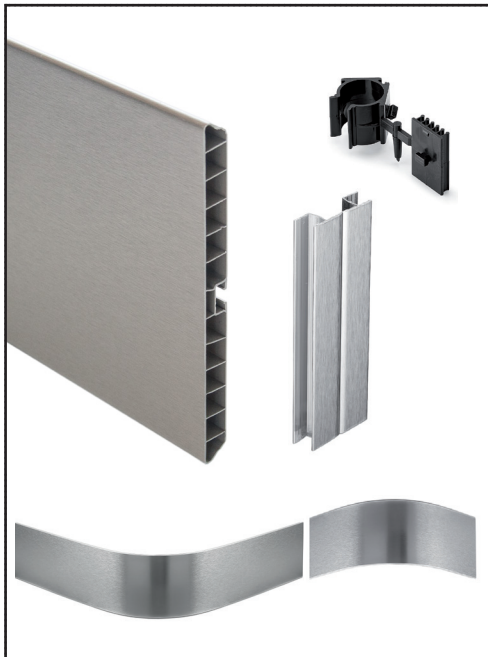
The information shown in this literature is accurate as at the date of print/release shown on such information but it may be subject to changes after such date. Please therefore ensure that you are viewing the most current product information available and check with us if you have any doubt about the suitability of the product or accuracy of the information shown.

We are proud that all our products that we sell are covered by a statutory warranty but this does not stop all our products naturally ageing overtime. As a result of this natural ageing process we are therefore unable to provide an identical colour finish to the existing products you have purchased from us with any products that we supply you from the same product line. In such event our liability will be limited to the purchase price paid for the product you are seeking to replace.

Due to the limitations on photographic reproduction, colours may differ slightly from the actual products shown. Please note that board matches listed with the doors are a suggestion only and better board matches may be available on the market. It is up to the individual to decide on its suitability.

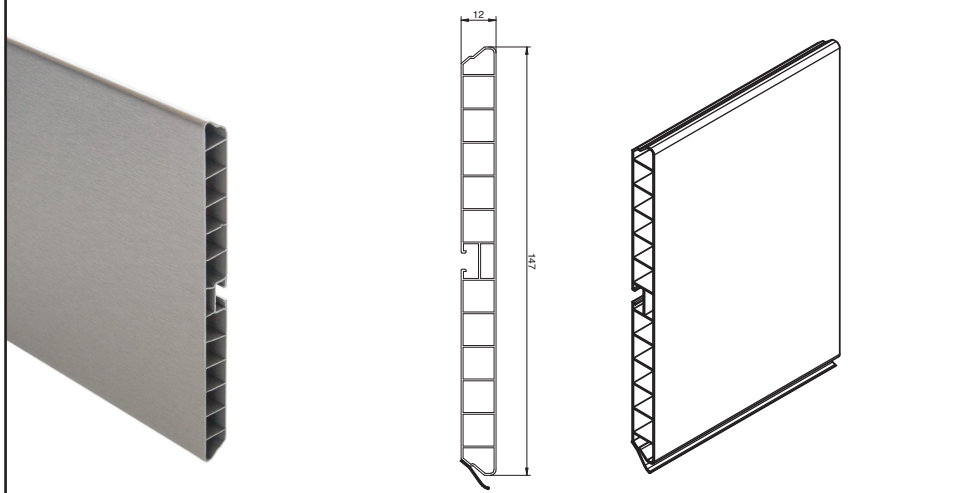
## ALUMINIUM EFFECT PLINTHS

The perfect accompaniment to any door range. These Aluminium effect plinths will add flair and a bespoke look. External and internal curved plinths are available to co-ordinate or contrast with your door.

	Product Information	
	<b>Product Description</b> <b>Product Finish</b> <b>Material</b> <b>Product Dimension</b>	Aluminium effect plinths Brushed aluminium Plastic Sizes as shown in the drawings
<b>Additional Information</b> <p>The plinth connectors can be angled to work with straight and curved plinths. They can also be used on internal and external corners.</p> <p>Plinth clips can also be used on corners to connect 2 plinths together.</p>		

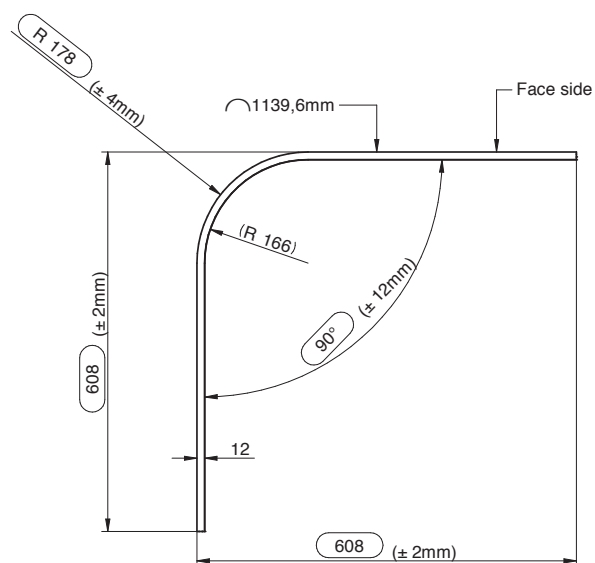
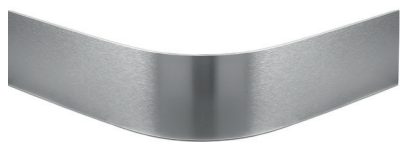
CODE	DESCRIPTION
30ALU001	MOULDED ALUMINIUM EFFECT PLINTH 3 MTR
30ALU002	ALUMINIUM EFFECT INTERNAL CURVE PLINTH

CODE	DESCRIPTION
30ALU003	ALUMINIUM EFFECT EXTERNAL CURVE PLINTH
30ALU004	ALUMINIUM EFFECT PLINTH FITTINGS (2 QTY PLINTH CLIPS PLUS 2 QTY CONNECTORS / ENDS)

Plinth	
	<b>Product Information</b> Aluminium effect plinth  <b>Product Code</b> 30ALU001  <b>Length:</b> 3000mm  The drawing shows the correct moulded section on the reverse of the plinth (not the photo).

# Accessories

## External Curved Plinth



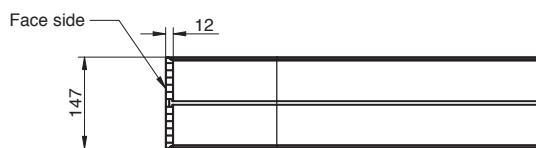
### Product Information

External curved aluminium effect plinth

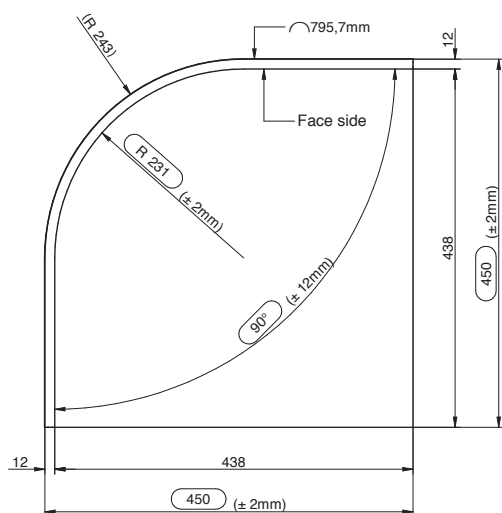
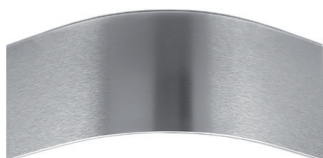
### Product Code

30ALU003

**PLEASE NOTE:** Due to the tolerance on this product, minimum 'pressure' might be needed in order to correctly position the plinth beneath the curved cabinet. The pressure should not be too strong in order to avoid excessive deformation of the curve.



## Internal Curved Plinth



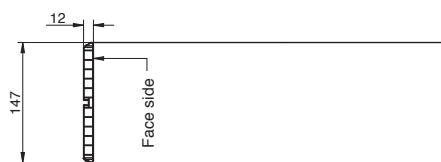
### Product Information

Internal curved aluminium effect plinth

### Product Code

30ALU002

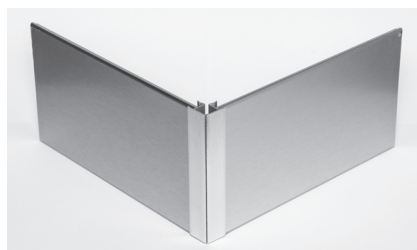
**PLEASE NOTE:** Due to the tolerance on this product, minimum 'pressure' might be needed in order to correctly position the plinth beneath the curved cabinet. The pressure should not be too strong in order to avoid excessive deformation of the curve.



## Plinth Fittings



Plinth Connector / End

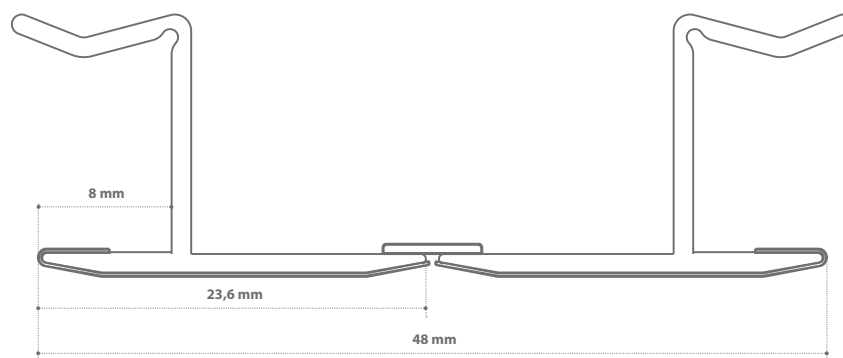


### Product Information

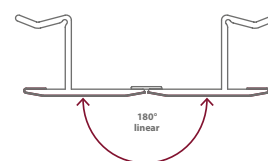
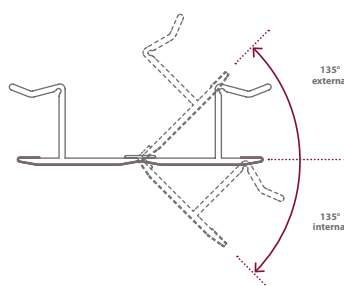
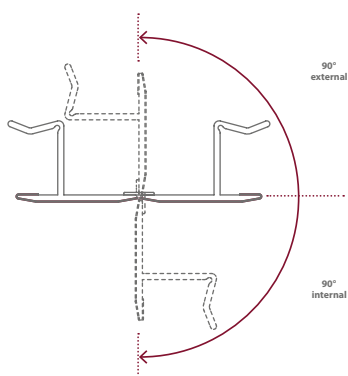
- Plinth fittings pack includes:
- Aluminium Effect Plinth Connectors / Ends (x2)
  - Plastic Plinth Clips (x2)

### Product Code

30ALU004



### MOVEMENT OPTIONS



The plinth connectors can be angled to work with straight and curved plinths. They can also be used on internal and external corners.


**Plinth clip** - can also be used on corners to connect 2 plinths together.



## COMPONENTS

	SPECIFICATION	PRODUCT CODE & INFORMATION	PRODUCT IMAGE
<b>PRODUCT</b>	<b>2 ARM TOWEL RAIL</b>	91TOWEL3	
MATERIAL / FINISH	ALUMINIUM		
MISC			
<b>PRODUCT</b>	<b>GLASS SHELVES</b>	15GLASS500 (FOR 500 CARCASE) 15GLASS600 (FOR 600 CARCASE)	
MATERIAL / FINISH	GLASS		
MISC	<ul style="list-style-type: none"> <li>• TO FIT 18mm CARCASE</li> <li>• SOLD IN PAIRS</li> <li>• 240mm DEEP</li> <li>• 6mm THICK GLASS</li> <li>• TOUGHENED GLASS</li> </ul>		
<b>PRODUCT</b>	<b>GLASS SHELVES FOR CURVED DOORS</b>	15GLASSCURVE	
MATERIAL / FINISH	GLASS		
MISC	<ul style="list-style-type: none"> <li>• FOR 300 X 300 CURVED CARCASE</li> <li>• SOLD IN PAIRS</li> <li>• 240 x 240 x 6mm</li> <li>• TOUGHENED GLASS</li> </ul>		
<b>PRODUCT</b>	<b>SHELF SUPPORTS</b>	15SHELF01A (TRANSPARENT)	
MATERIAL / FINISH	TRANSPARENT		
MISC	<ul style="list-style-type: none"> <li>• SOLD AS A PACK OF 1000</li> <li>• 5mm PIN</li> </ul>		
<b>PRODUCT</b>	<b>STEEL WASTE BIN</b>	69BIN01	
MATERIAL / FINISH	STEEL / PLASTIC		
MISC	<ul style="list-style-type: none"> <li>• 12 LITRE CAPACITY</li> <li>• (D)290MM X (W)290MM X (H)340MM</li> </ul>		

# Accessories




SPECIFICATION		PRODUCT CODE & INFORMATION	PRODUCT IMAGE
<b>PRODUCT</b>	<b>PULL OUT BIN - SINGLE</b>	69BIN07	
MATERIAL / FINISH	CHROME / PLASTIC		
MISC	<ul style="list-style-type: none"> <li>1 X 16 LITRE CAPACITY</li> <li>MINIMUM CABINET WIDTH 400mm</li> <li>DIM(mm): 350 (H) X 295 (W) X 370 (D)</li> </ul>		
<b>PRODUCT</b>	<b>PULL OUT BIN 2 COMPARTMENTS</b>	69BIN08	
MATERIAL / FINISH	CHROME / PLASTIC		
MISC	<ul style="list-style-type: none"> <li>2 X 7.5 LITRE CAPACITY</li> <li>MINIMUM CABINET WIDTH 400mm</li> <li>DIM(mm): 350 (H) X 295 (W) X 370 (D)</li> </ul>		
<b>PRODUCT</b>	<b>TRIO RECYCLING BIN &amp; TRAY</b>	69BIN09	
MATERIAL / FINISH	PLASTIC		
MISC	<ul style="list-style-type: none"> <li>3 X 12 LITRE CAPACITY</li> <li>TO FIT 1000mm CARCASE</li> <li>DIM(mm): 230 (H) X 940 (W) X 500 (D)</li> <li>SUPPLIED WITH WITH 3 COMPARTMENTS</li> </ul>		
<b>PRODUCT</b>	<b>BLACK ADJUSTABLE LEGS, PLINTH CLIPS AND PLATES</b>	15ADJ100 (100mm LEG) 15ADJ150 (150mm LEG) 15ADJCLIP (Plinth clips and plates)	
MATERIAL / FINISH	PLASTIC		
MISC	<ul style="list-style-type: none"> <li>100 / 150mm HEIGHT FOR LEGS</li> <li>SET OF 4</li> </ul>		
<b>PRODUCT</b>	<b>CHROME LEG</b>	15CHROME01 (870mm)	
MATERIAL / FINISH	CHROME		
MISC	<ul style="list-style-type: none"> <li>60mm DIAMETER</li> <li>870mm HIGH</li> </ul>		

# Accessories

SPECIFICATION		PRODUCT CODE & INFORMATION	PRODUCT IMAGE
<b>PRODUCT</b>	<b>STEEL LEG</b>	15STEEL01 (870mm)	
MATERIAL / FINISH	STEEL		
MISC	<ul style="list-style-type: none"> <li>• 60mm DIAMETER</li> <li>• 870mm HIGH</li> </ul>		
<b>PRODUCT</b>	<b>MITRE MATE ADHESIVE AND ACTIVATOR</b>	9906	
MATERIAL / FINISH	N/A		
MISC			
<b>PRODUCT</b>	<b>BLACK CARCASE SCREWS (7 X 45)</b>	89BHILO01	
MATERIAL / FINISH	STEEL		
MISC	<ul style="list-style-type: none"> <li>• POZI SCREWS</li> <li>• 7 X 45</li> <li>• SOLD AS A PACK OF 1000 SCREWS</li> </ul>		
<b>PRODUCT</b>	<b>PIANO HINGE</b>	95PIANO02	
MATERIAL / FINISH	NICKEL PLATED		
MISC	<ul style="list-style-type: none"> <li>• 1800 X 32mm</li> </ul>		
<b>PRODUCT</b>	<b>MENDING PLATE</b>	96MEND01A (RAL 9001)	
MATERIAL / FINISH	RAL 9001 / ZINC PLATED		
MISC	<ul style="list-style-type: none"> <li>• SOLD IN BAGS OF 20</li> </ul>		



# Accessories

SPECIFICATION		PRODUCT CODE & INFORMATION	PRODUCT IMAGE
<b>PRODUCT</b>	<b>ANGLE BRACKETS</b>	96ANG01A (19 X 19mm) SOLD AS PACK OF 200 96ANG02A (25 X 25mm) SOLD AS PACK OF 200 96ANG03A (38 X 38mm) SOLD AS PACK OF 100	
MATERIAL / FINISH	MILD STEEL		
MISC			
<b>PRODUCT</b>	<b>WORKTOP 150MM CONNECTOR</b>	10BOLTA	
MATERIAL / FINISH			
MISC	<ul style="list-style-type: none"> <li>SOLD AS PACK OF 50</li> </ul>		
<b>PRODUCT</b>	<b>CORNER CASTOR</b>	96CAST01	
MATERIAL / FINISH			
MISC			



## Contact us

**Telephone** 0161 336 3636  
**Fax** 0161 336 3638  
**Free-Fax** 0808 144 2422  
**Email** [sales@tkc.co.uk](mailto:sales@tkc.co.uk)  
**Web** [www.tkc.co.uk](http://www.tkc.co.uk)  
**Order** [www.trade.tkc.co.uk](http://www.trade.tkc.co.uk)



## Address

Unit 3  
Cranberry Drive  
Denton  
Manchester  
M34 3UL

## Area Sales

Scotland 07770 017422  
North East 07766 021114  
Yorkshire 07976 643485  
North West 07584 241838  
Merseyside, North Wales & West Cheshire 07970 923474  
East Midlands 07770 017440  
West Midlands 07899 948786  
South West & South Wales 07799 320910  
London & Home Counties (North) 07823 442668  
London & Home Counties (South) 07792 078830  
Northern Ireland 07436 160980

All goods are sold subject to our Terms and Conditions of Sale which are available upon request.